

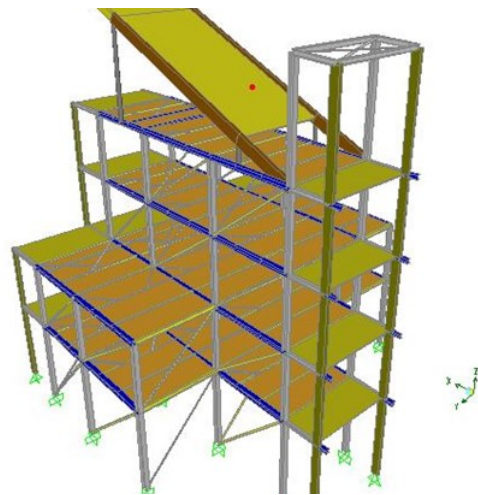
# STRUCTURAL DESIGN

Premier Structural Design Services: Modeling, Front End Design Support and Review

At MAC Engineering, headquartered in Houston, TX, we deliver comprehensive structural design services with a global reach. With over 15 years of specialized experience in diverse materials and projects, MAC is committed to technical excellence and precision in every venture, be it local or international. Discover how our capabilities can elevate your project:

## Our Services:

- **Structural Finite Element Analysis:** Employ advanced technology for meticulous structural assessments.
- **Structural Drawing Review:** Ensure accuracy and precision in all your structural plans with our expert review.
- **Construction Submittal Review:** Streamline your construction process through our thorough examination of materials, plans, and compliance documents.
- **Code Compliance:** Rely on our expertise to navigate complex code requirements, including ASCE 7, the IBC suite, NFPA codes, and international building standards.
- **Contract Reviewing:** Secure your project's success with our detailed contract analysis, ensuring clarity and mutual agreement on all terms.



Finite Element Structural Model and Actual Structure

- **Structural Modeling**
- **Finite Element Analysis**
- **Front End Design Support**
- **Submittal Review**

## WHY CHOOSE MAC ENGINEERING?

**Licensed Professional:** Our team holds Professional Engineering licenses in over 10 U.S. states, as well as Alberta and Ontario, Canada, and Italy, underscoring our extensive qualification to manage both domestic and international projects.

**Experienced Partner:** As a trusted technical support partner, we have a proven track record with a variety of structural projects across the United States and globally.

**Technical Leader:** We actively contribute to industry standards and leverage the latest technological advancements to provide forward-thinking solutions.



Construction stages can be modeled to ensure safety during erection of steel framing.

### MATERIALS SPECIALIZATION

- Concrete
- Structural Steel
- Cold Formed Steel
- Wood Structures

### PROJECT TYPES

- Commercial Buildings
- Industrial Facilities
- Residential Developments

### CODE AND STANDARDS

- Extensive knowledge and application of critical design codes
- Active involvement in the development of ASCE Standards and Technical Reports

## CONTACT MAC FOR YOUR NEXT PROJECT

If you're seeking a partner to ensure the structural integrity and success of your project, MAC Engineering is ready to assist. We invite you to connect with us to discuss how we can serve your needs with expertise and dedication.

### CONTACT:

Phone: 512 634 6494

Email: [info@maceng.us](mailto:info@maceng.us)

Website: [www.maceng.us](http://www.maceng.us)



Feel free to reach out with any inquiries or to arrange a detailed consultation. At MAC Engineering, we are dedicated to your project's success from the ground